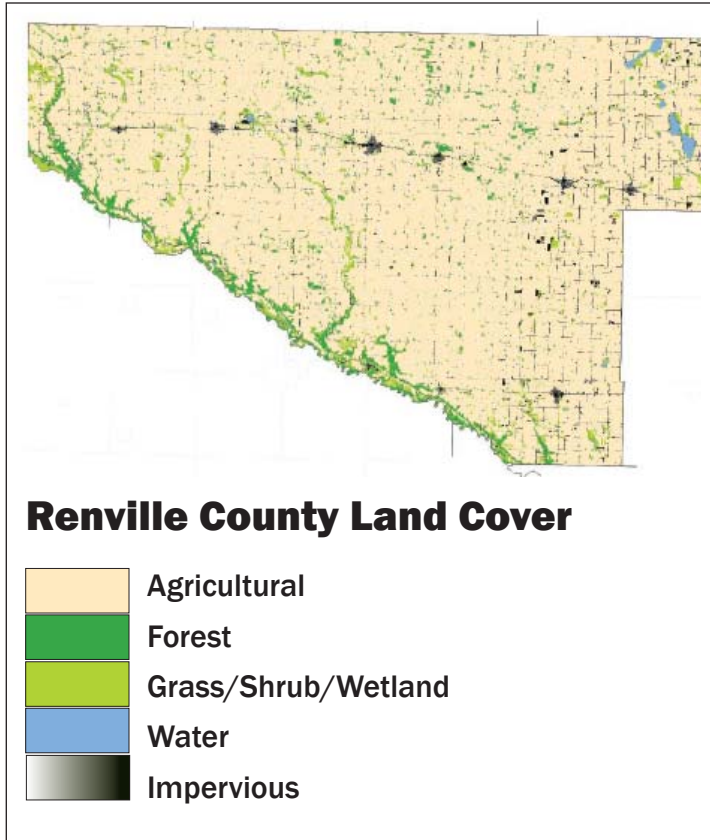


# Renville

## Soil & Water Conservation District



1008 West Lincoln  
Olivia MN, 56277  
PHONE: (320) 523-1559  
FAX: (320) 523-2389  
www.renvillewcd.com

*SWCD board meetings:  
2nd Thursday of month at 7 a.m.,  
Ag Services Building, Olivia*

### Recent Projects / Accomplishments



Pictured: This CREP easement in Renville County borders the Minnesota River.

Renville boasts the largest number of conservation easement acres through Reinvest In Minnesota (RIM) Reserve and CREP in Minnesota. SWCD staff continue to work with landowners on maintenance and improvement of their easement acres. In addition to offering advice and technical assistance, staff assist landowners with the process of obtaining funding from various sources. This requires a positive working relationship and partnership with USDA offices, U.S. Fish and Wildlife Service personnel and DNR private lands specialists.

### 2005 Expenditures by category

Monitoring / Research	\$12,500
Education / Outreach	\$62,000
Wetland Conservation Act	\$14,631
Cost Share / project construction, implementation and maintenance	\$51,500
Planning/ other local water management duties	\$80,096
Conservation easement funding / assistance	\$27,500
Programs and Operations	\$40,000
<b>Total</b>	<b>\$288,227</b>

### SWCD Board of Supervisors

Name	Position	Address	Phone	Elected
Loyal Fisher	Chair	PO Box 222, Renville	320-329-3925	1998
Marc Iverson	Sec/Treas	420 Pine Avenue, Bird Island	320-365-4354	2006
Kathryn K. Kelly	PR&I	402 South 10th Street, Olivia	320-523-1283	2005
Bill Radermacher	Vice Chair	38544 County Road 2, Franklin	507-557-8213	2000
James Schafer	Member	51777 780th Avenue, Hector	320-833-2083	1970

**A Farm Bill Technician** at the Renville SWCD works full-time promoting the conservation programs in the USDA Farm Bill. Through his promotion efforts, Renville County continues to enroll acres in the Continuous Conservation Reserve Program (CCRP). Workloads for SWCD employees and the USDA Natural Resources Conservation Service staff prevent them from doing the one-on-one contacts with landowners that are essential in keeping them informed of possible CCRP projects. The position is funded through the Board of Water and Soil Resources, Pheasants Forever and through matching funds from the SWCD.

**An outdoor event called WALK** (Water\*Air\*Land\*Knowledge) is coordinated each year by the Renville SWCD. WALK is an event for sixth graders that teaches them about wise land use and how human decisions affect wildlife populations. Students hike through cropland areas and conservation easement acres. In 2007 four school districts attended with a total of 200 students. SWCD staff are assisted by employees from Renville County, Hawk Creek Watershed Project, NRCS and the DNR.

**Renville SWCD successfully partners** with Renville County in several areas. SWCD staff provide the feedlot inspections required by MPCA Chapter 7020 (2003). SWCD staff have been able to help landowners correct problems with noncompliant feedlots by assisting them in obtaining cost-share from various sources, including EQIP, State Cost-Share, Watershed project funds, and Ag BMP loans. These funds have enabled feedlot operators to pay for projects that control runoff, which results in improved water quality in Renville County.

Renville SWCD staff also partner with Renville County by providing assistance to landowners who are required by county zoning rules to install rain gardens. Staff assist landowners with location and design and then approve the project for the zoning office. SWCD staff also work with mining companies on reviewing and approving reclamation plans that are required as part of the permitting process.

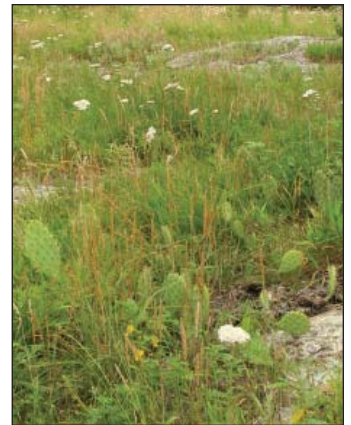
## Top 5 Natural Resource Concerns

1. Protect rare and unique species and landscapes within the Minnesota River Corridor
2. Reduce nutrient runoff into ditches, streams and rivers by installing buffer strips
3. Reduce ag waste runoff by inspecting and correcting all animal feedlot runoff in Renville County
4. Reduce wind erosion through conservation tillage methods
5. Improve water quality through wetland restorations and critical area seeding, and by enrolling poor and marginal ag land into perpetual conservation easements

## Future Projects

### Granite Rock Outcrop and associated wetland easements

-- Renville SWCD partnered with Redwood SWCD to submit an LCCMR grant application for a RIM-like easement program. The project was funded and will provide \$563,000 to protect Granite Rock Outcrops and associated wetlands in the Minnesota River Valley. In mid-2007 staff began the process of promoting the easements to landowners. This is a two-year grant that will require SWCD staff involvement in promotion, easement processing and practice implementation over the coming years. The SWCDs have prepared and submitted a Phase II grant proposal to the LCCMR for funding to protect additional acres.



**Pictured: Prickly pear cactus and other rare plants thrive in Granite Rock Outcrops like this one in Renville County.**